

Direct Lightning Current Measurements in southeastern Brazil

II: Correlations

Moacir Lacerda*
Osmar Pinto Jr.*
Iara José H. Diniz**
André M. Carvalho**
R.C.A. Pinto*

Instituto Nacional de Pesquisas Espaciais, São José dos Campos, São Paulo, Brazil*
Companhia Energetica de Minas Gerais, Belo Horizonte, Minas Gerais, Brazil**

This paper shows data associated with 50 subsequent return stroke of 22 natural negative descendent lightning discharges in Brazil captured by a 60 m metallic tower, between 1985 and 1994. It is investigated the possible correlations among the time to peak value of derivative current, time to peak current, the peak value of the electric current, and the peak value of the derivative current. We discuss some physical consequences relating to them. We suggest that there may be a non-linear correlation between the time to peak occurrence and the magnitude of these parameters.

INTRODUCTION.

This paper is a sequence of paper 1⁽¹⁾, where some general aspects of data acquired by CEMIG LIGHTNING RESEARCH STATION (CLRS)⁽²⁾ (43° 58' 26"W, 20°00'39"S) were presented. We present here some correlations among several parameters of subsequent strokes: t_{dm} (time to peak value of derivative current), t_{peak} (time to peak current), I_{peak} (peak value of the current), and $(di/dt)_{max}$ (peak value of derivative current di/dt).

DATA ANALYSIS

Figure 1 presents the correlation between t_{dm} and t_{peak} . It shows that the instant when the peak current occurs is correlated with the instant of peak derivative current, with a correlation coefficient of 94%. This fact allows to conclude that the instant of peak radiation as calculated according a mathematical model of a radiating antenna⁽³⁾ is correlated with the instant of current peak. Otherwise, figure 2 shows that there is no correlation between the magnitudes of I_{peak} and $(di/dt)_{max}$. The mean values for t_{peak} and t_{dm} are 1.75 μ s and 1.09 μ s, respectively. The mean value for I_{peak} and $(di/dt)_{max}$ are 18.07 kA and 32.82 kA/ μ s, respectively.

Figures 3 shows that mean values of $(di/dt)_{max}$ increase for t_{dm} lower than 1.0 microsecond and figure 4 shows that mean values of I_{peak} increase for t_{peak} lower than 1.5 microsecond. In both cases the parameters decrease after a maximum. The meaning of this fact is that there may be some factors which tends to increase I_{peak} or $(di/dt)_{max}$ and others which reduces their intensities. Depending on the values of t_{dm} and t_{peak} , some factors predominate over the others.

CONCLUSION

Data of 50 subsequent strokes of natural lightning flashes which striken a 60 m metallic tower in Brazil are used to obtain some correlations between electric parameters. The main conclusions are:

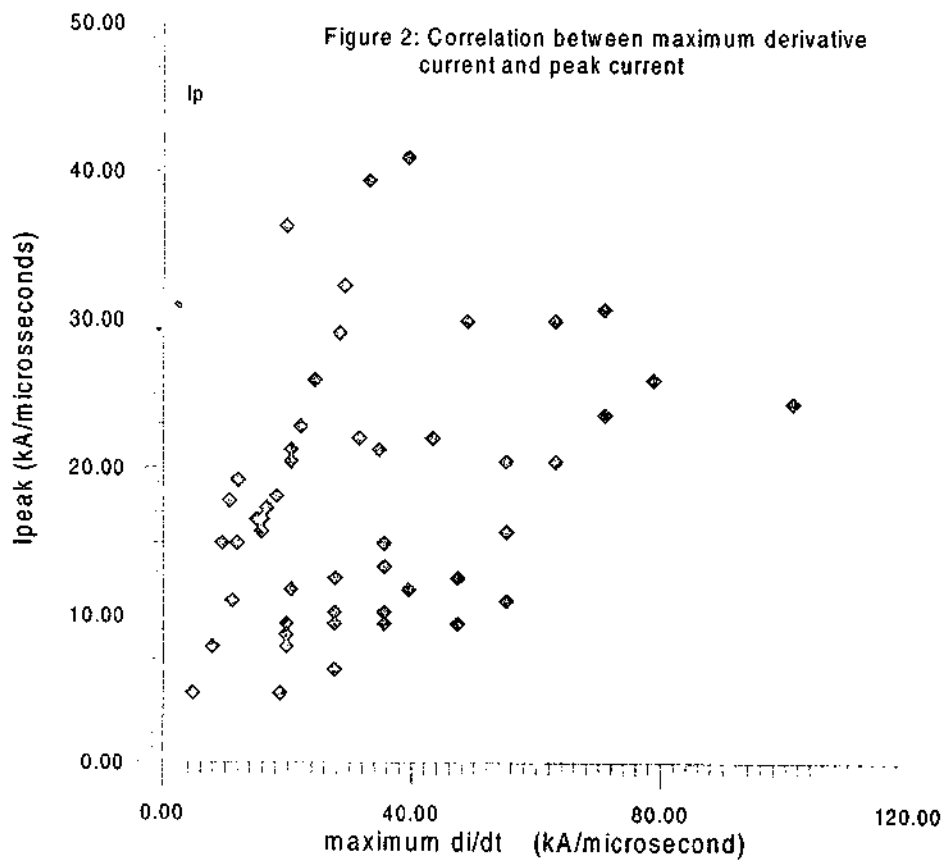
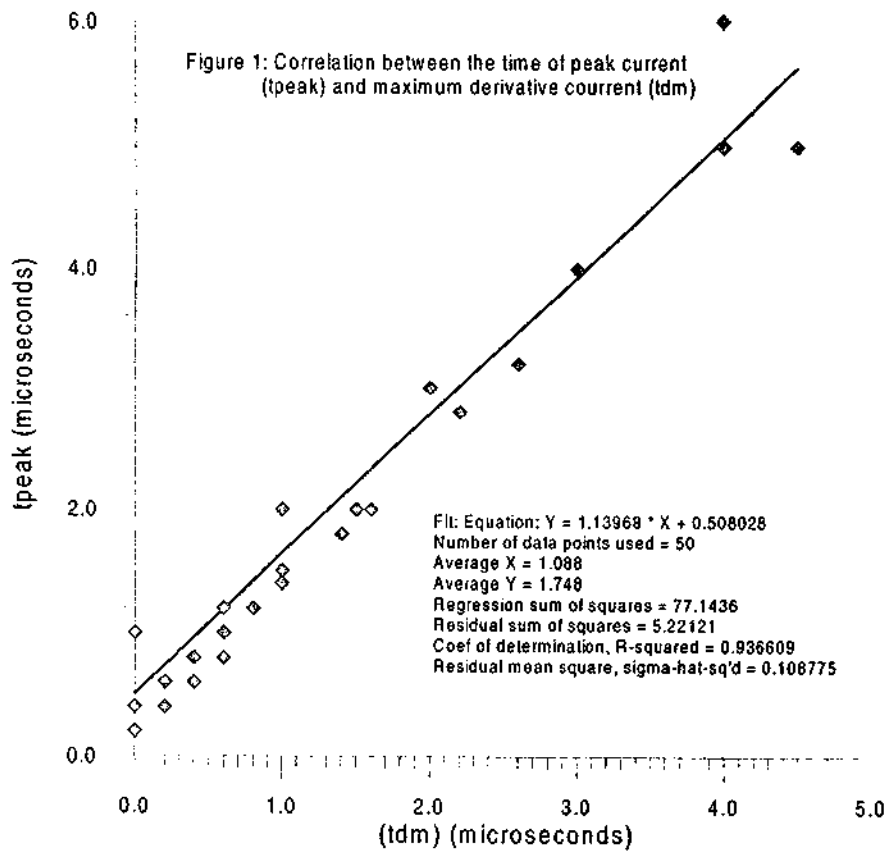
- 1) The instant of time of maximum derivative current is correlated with the instant of peak current. Otherwise, the values of maximum derivative current and peak current are not correlated. This fact may indicate that the current waveform presents approximately the same shape, while increasing, for all discharges.
- 2) Apparently there may be a non-linear correlation between the instant of occurrence of peak current and its magnitude and between the time to peak derivative current and the magnitude of this parameter. No explanations for these facts exist.

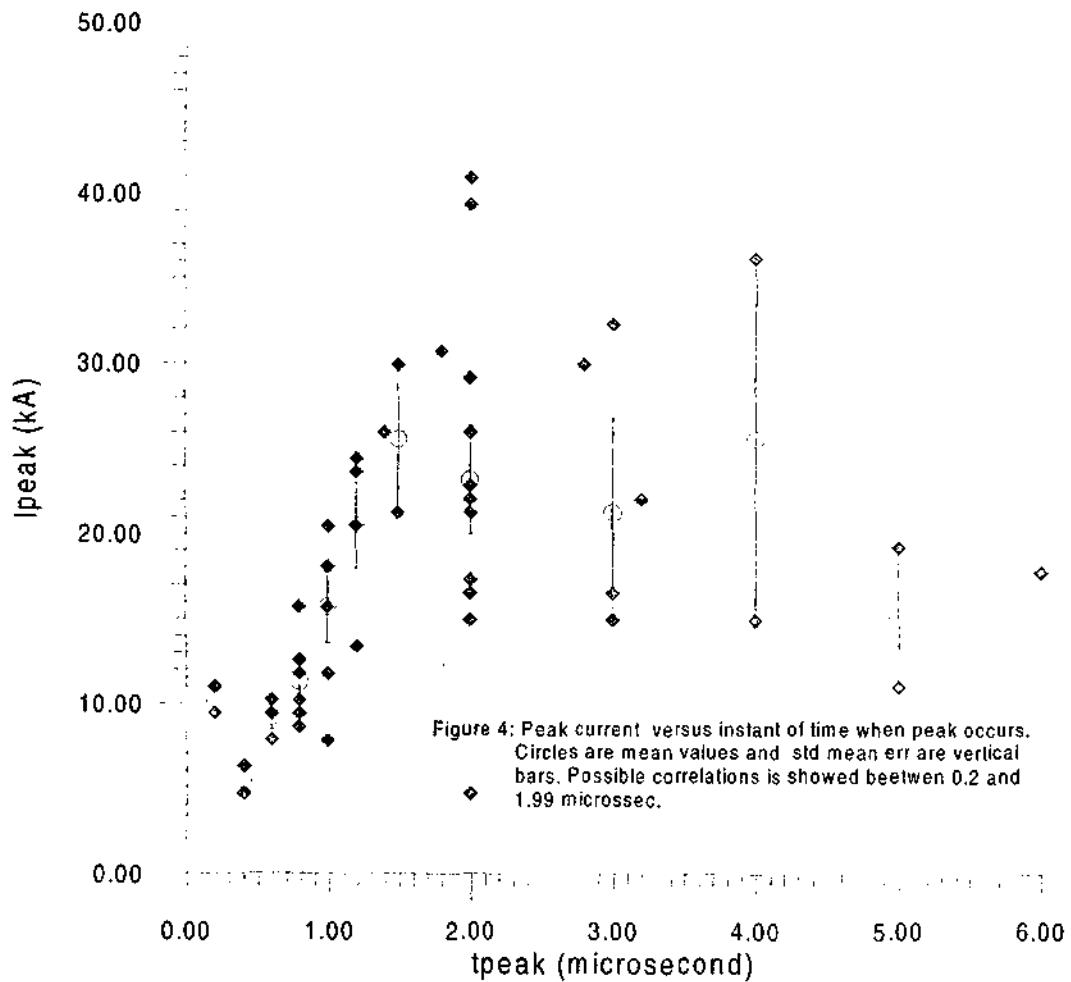
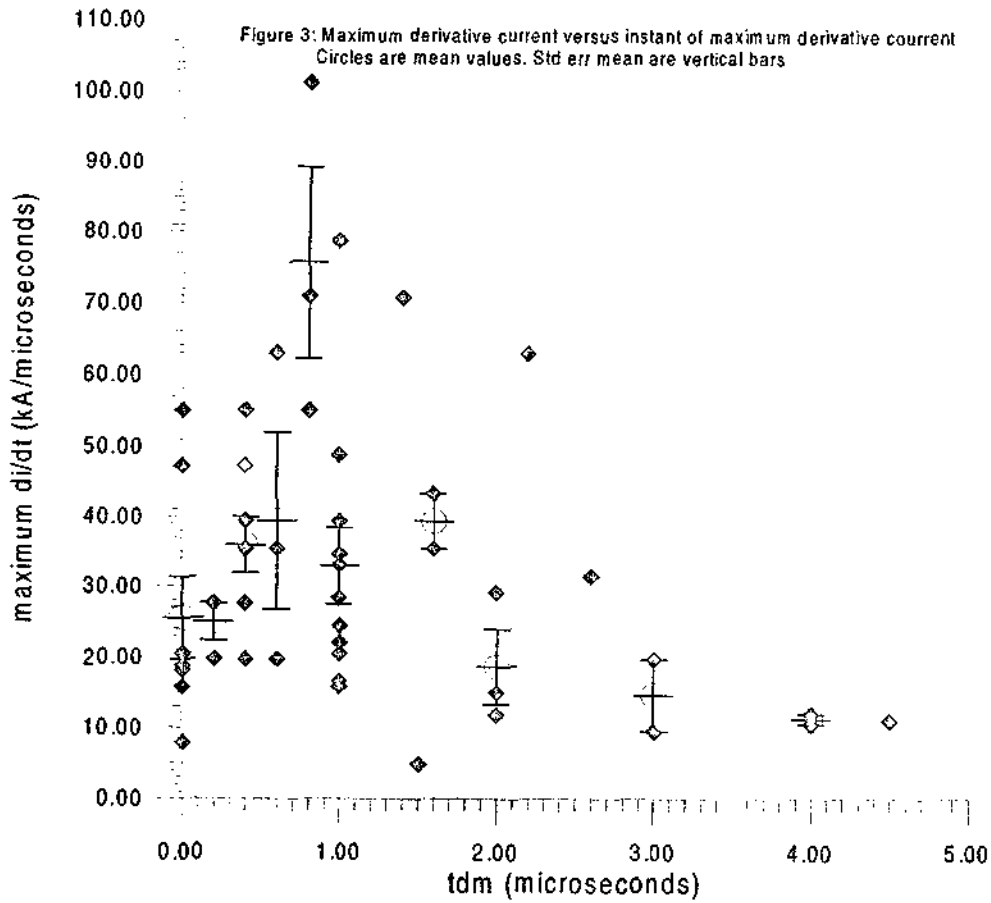
ACKNOWLEDGMENTS

We acknowledge all the technical personnel of CEMIG for laborious work in maintaiting the CACHIMBO'S STATION and specially to Eng. Jacinto Soares Filho and Eng. Carlos Alexandre Meireles do Nascimento for pre-treatment of data, information and "help on line" given.

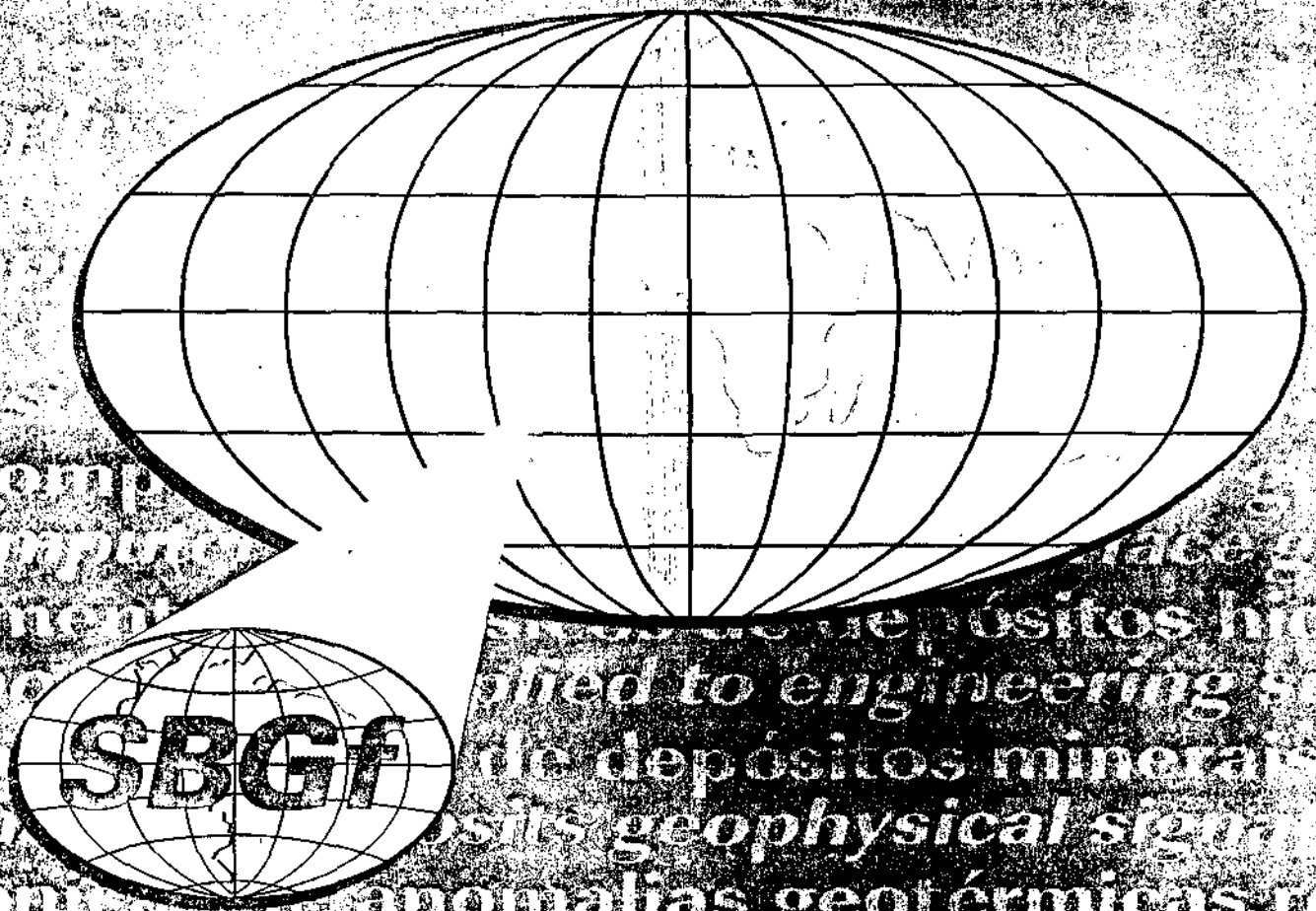
REFERENCES

- Lacerda, M., Pinto Jr., O., Pinto, I. C. A., Diniz, J. H., Carvalho, A. M., Direct Lightning Current Measurements in Southeastern Brazil I. Current Waveform; This proceeding.
Soares Filho, J. J., Carvalho, A. M., Diniz, J. H., Parâmetros de Descargas Atmosféricas; Resultados de 9 anos de Pesquisa na Estação do Cachimbo Período 1985-1994. Relatório nº 02.110 ST/DN1-001 CEMIG, Dez 1995.
Uman, M., The Lightning Discharge, Academic Press, Inc. London, 1987.





5º congresso da internacional sociedade brasileira de geofísica



RESUMOS EXPANDIDOS
EXPANDED ABSTRACTS

28 de setembro a 02 de outubro de 1997
Centro de Convenções do Hotel Transamérica

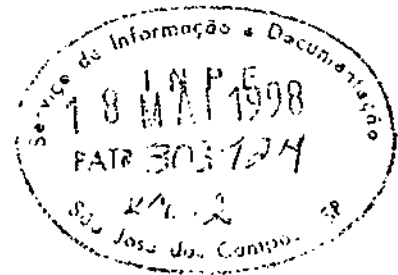
São Paulo - Brasil
Cidade de São Paulo - Brasil

**5^o CONGRESSO INTERNACIONAL DA SOCIEDADE
BRASILEIRA DE GEOFÍSICA**

**5th INTERNATIONAL CONGRESS OF THE BRAZILIAN
GEOPHYSICAL SOCIETY**

**Resumos Expandidos
Expanded Abstracts**

VOLUME II



SÃO PAULO
28 de setembro a 02 de outubro de 1997